



Location: CMA1b - Oil Street Site Office

Report on 24-hour TSP monitoring

Action Level ($\mu\text{g}/\text{m}^3$) - 176.7

Limit Level ($\mu\text{g}/\text{m}^3$) - 260

Date	Sampling Time	Weather Condition	Filter paper no.	Filter Weight, g		Elapse Time, hr		Sampling Time, hr	Flow Rate, m^3/min			Total Volume, m^3	TSP Level, $\mu\text{g}/\text{m}^3$
				Initial	Final	Initial	Final		Initial, Q_{si}	Final, Q_{sf}	Average		
2-Apr-13	8:00	Cloudy	004662	2.7287	2.8417	2599.16	2623.16	24.00	0.99	1.00	0.99	1433	79
8-Apr-13	8:00	Rainy	004726	2.8285	3.0661	2626.16	2650.15	23.99	1.18	1.18	1.18	1699	140
13-Apr-13	8:00	Cloudy	004693	2.7232	2.9298	2653.15	2677.15	24.00	1.27	1.27	1.27	1825	113
20-Apr-13	13:00	Cloudy	006044	2.6136	2.7244	2707.18	2731.18	24.00	1.08	1.09	1.09	1564	71
25-Apr-13	8:00	Cloudy	006045	2.6357	2.8992	2731.18	2755.18	24.00	1.08	1.09	1.08	1561	169

* Due to lack of electricity supply, 24 hr TSP monitoring was rescheduled from 19 Apr 2013 to 20 Apr 2013.

Report on 1-hour TSP monitoring

Action Level ($\mu\text{g}/\text{m}^3$) - 320.1

Limit Level ($\mu\text{g}/\text{m}^3$) - 500

Date	Sampling Time	Weather Condition	Filter paper no.	Filter Weight, g		Elapse Time, hr		Sampling Time, hr	Flow Rate, m^3/min			Total Volume, m^3	TSP Level, $\mu\text{g}/\text{m}^3$
				Initial	Final	Initial	Final		Initial, Q_{si}	Final, Q_{sf}	Average		
3-Apr-13	8:30	Cloudy	004741	2.8446	2.8582	2623.16	2624.16	1.00	1.13	1.13	1.13	68	200
3-Apr-13	9:39	Cloudy	004738	2.8381	2.8498	2624.16	2625.16	1.00	1.13	1.13	1.13	68	172
3-Apr-13	10:43	Cloudy	004723	2.8249	2.8369	2625.16	2626.16	1.00	1.18	1.18	1.18	71	170
9-Apr-13	8:00	Rainy	004669	2.7445	2.7539	2650.15	2651.15	1.00	1.25	1.25	1.25	75	126
9-Apr-13	9:00	Rainy	004732	2.8263	2.8288	2651.15	2652.15	1.00	1.25	1.25	1.25	75	33
9-Apr-13	10:00	Rainy	004805	2.8192	2.8300	2652.15	2653.15	1.00	1.16	1.14	1.15	69	157
15-Apr-13	13:00	Hazy	004960	2.7660	2.7885	2677.15	2678.15	1.00	1.06	1.06	1.06	64	353
15-Apr-13	14:20	Hazy	004913	2.7459	2.7655	2678.15	2679.15	1.00	1.20	1.20	1.20	72	273
15-Apr-13	15:28	Hazy	004931	2.7840	2.8186	2679.15	2680.15	1.00	1.24	1.24	1.24	74	465
20-Apr-13	8:00	Cloudy	006038	2.6478	2.6551	2704.18	2705.18	1.00	1.15	1.15	1.15	69	106
20-Apr-13	9:12	Cloudy	006040	2.6383	2.6439	2705.18	2706.18	1.00	1.13	1.13	1.13	68	83
20-Apr-13	10:23	Cloudy	006042	2.6409	2.6476	2706.18	2707.18	1.00	1.11	1.11	1.11	66	101
26-Apr-13	8:05	Cloudy	004691	2.6844	2.6924	2755.18	2756.18	1.00	1.13	1.13	1.13	68	118
26-Apr-13	9:13	Cloudy	004749	2.8051	2.8108	2756.18	2757.18	1.00	1.13	1.13	1.13	68	84
26-Apr-13	10:25	Cloudy	004779	2.8254	2.8319	2757.18	2758.18	1.00	1.13	1.13	1.13	68	96

Location: CMA2a - Causeway Bay Community Centre

Report on 24-hour TSP monitoring
Action Level ($\mu\text{g}/\text{m}^3$) - 169.5
Limit Level ($\mu\text{g}/\text{m}^3$) - 260

Date	Sampling Time	Weather Condition	Filter paper no.	Filter Weight, g		Elapse Time, hr		Sampling Time, hr	Flow Rate, m^3/min			Total Volume, m^3	TSP Level, $\mu\text{g}/\text{m}^3$
				Initial	Final	Initial	Final		Initial, Q_{si}	Final, Q_{sf}	Average		
2-Apr-13	8:00	Cloudy	004661	2.7321	2.8342	12362.67	12386.67	24.00	1.28	1.28	1.28	1848	55
8-Apr-13	8:00	Rainy	004725	2.8305	3.0180	12389.67	12413.67	24.00	1.39	1.39	1.39	2008	93
13-Apr-13	8:00	Cloudy	004694	2.7260	2.9383	12416.67	12440.67	24.00	1.35	1.35	1.35	1945	109
19-Apr-13	8:00	Cloudy	004205	2.7413	2.8680	12443.66	12467.66	24.00	1.55	1.55	1.55	2235	57
25-Apr-13	8:00	Cloudy	006043	2.6002	2.7238	12470.66	12494.66	24.00	1.38	1.39	1.39	1997	62

Report on 1-hour TSP monitoring
Action Level ($\mu\text{g}/\text{m}^3$) - 323.4
Limit Level ($\mu\text{g}/\text{m}^3$) - 500

Date	Sampling Time	Weather Condition	Filter paper no.	Filter Weight, g		Elapse Time, hr		Sampling Time, hr	Flow Rate, m^3/min			Total Volume, m^3	TSP Level, $\mu\text{g}/\text{m}^3$
				Initial	Final	Initial	Final		Initial, Q_{si}	Final, Q_{sf}	Average		
3-Apr-13	8:23	Cloudy	004742	2.8216	2.8389	12386.67	12387.67	1.00	1.41	1.41	1.41	84	205
3-Apr-13	9:28	Cloudy	004739	2.8096	2.8255	12387.67	12388.67	1.00	1.41	1.41	1.41	84	188
3-Apr-13	10:32	Cloudy	004722	2.8134	2.8260	12388.67	12389.67	1.00	1.37	1.37	1.37	82	154
9-Apr-13	8:00	Rainy	004660	2.7064	2.7176	12413.67	12414.67	1.00	1.42	1.42	1.42	85	132
9-Apr-13	9:00	Rainy	004657	2.7267	2.7389	12414.67	12415.67	1.00	1.42	1.42	1.42	85	144
9-Apr-13	10:00	Rainy	004697	2.7075	2.7181	12415.67	12416.67	1.00	1.42	1.42	1.42	85	125
15-Apr-13	13:00	Hazy	004231	2.6981	2.7181	12440.67	12441.67	1.00	1.35	1.35	1.35	81	248
15-Apr-13	14:07	Hazy	004914	2.7571	2.7795	12441.67	12442.67	1.00	1.35	1.35	1.35	81	277
15-Apr-13	15:15	Hazy	004912	2.7580	2.7811	12442.67	12443.67	1.00	1.35	1.35	1.35	81	286
20-Apr-13	13:00	Cloudy	006037	2.6580	2.6630	12467.66	12468.66	1.00	1.39	1.39	1.39	83	60
20-Apr-13	14:06	Cloudy	006039	2.6353	2.6419	12468.66	12469.66	1.00	1.39	1.39	1.39	83	79
20-Apr-13	15:14	Cloudy	006041	2.6072	2.6151	12469.66	12470.66	1.00	1.39	1.39	1.39	83	95
26-Apr-13	8:03	Cloudy	004690	2.6901	2.6945	12494.67	12495.67	1.00	1.39	1.39	1.39	83	53
26-Apr-13	9:07	Cloudy	004773	2.8191	2.8262	12495.67	12496.67	1.00	1.37	1.37	1.37	82	86
26-Apr-13	10:15	Cloudy	004750	2.8249	2.8305	12496.67	12497.67	1.00	1.39	1.39	1.39	83	67



Location: CMA3a - CWB PRE Site Office Area

Report on 24-hour TSP monitoring
 Action Level ($\mu\text{g}/\text{m}^3$) - 171
 Limit Level ($\mu\text{g}/\text{m}^3$) - 260

Date	Sampling Time	Weather Condition	Filter paper no.	Filter Weight, g		Elapse Time, hr		Sampling Time, hr	Flow Rate, m^3/min			Total Volume, m^3	TSP Level, $\mu\text{g}/\text{m}^3$
				Initial	Final	Initial	Final		Initial, Q_{si}	Final, Q_{sf}	Average		
2-Apr-13	8:00	Cloudy	004744	2.8415	3.0743	13139.09	13163.09	24.00	1.46	1.46	1.46	2105	111
9-Apr-13	8:00	Rainy	006075	2.6114	2.7228	13191.93	13215.93	24.00	1.55	1.55	1.55	2230	50
13-Apr-13	8:00	Cloudy	004171	2.7375	3.0175	13215.93	13239.92	23.99	1.66	1.65	1.66	2386	117
19-Apr-13	8:00	Cloudy	004921	2.7780	2.9549	13242.92	13266.93	24.01	1.56	1.56	1.56	2246	79
26-Apr-13	14:15	Cloudy	004670	2.7413	3.1004	13285.57	13309.57	24.00	1.61	1.61	1.61	2317	155

*Due to lack of electricity supply, the 24hr-TSP monitoring was rescheduled from 08 Apr 2013 to 09 Apr 2013 and from 25 Apr 2013 to 26 Apr 2013.

Report on 1-hour TSP monitoring
 Action Level ($\mu\text{g}/\text{m}^3$) - 311.3
 Limit Level ($\mu\text{g}/\text{m}^3$) - 500

Date	Sampling Time	Weather Condition	Filter paper no.	Filter Weight, g		Elapse Time, hr		Sampling Time, hr	Flow Rate, m^3/min			Total Volume, m^3	TSP Level, $\mu\text{g}/\text{m}^3$
				Initial	Final	Initial	Final		Initial, Q_{si}	Final, Q_{sf}	Average		
3-Apr-13	9:15	Cloudy	004916	2.8100	2.8283	13163.09	13164.09	1.00	1.64	1.64	1.64	99	186
3-Apr-13	10:57	Cloudy	004918	2.8051	2.8189	13164.09	13165.09	1.00	1.64	1.64	1.64	99	140
3-Apr-13	13:25	Cloudy	004920	2.7907	2.8095	13165.09	13166.09	1.00	1.55	1.55	1.55	93	202
9-Apr-13	9:00	Rainy	006069	2.6323	2.6419	13188.93	13189.93	1.00	1.52	1.52	1.52	91	105
9-Apr-13	10:30	Rainy	006071	2.6222	2.6298	13189.93	13190.93	1.00	1.52	1.52	1.52	91	83
9-Apr-13	13:00	Rainy	006073	2.6282	2.6340	13191.93	13192.93	1.00	1.52	1.52	1.52	91	63
15-Apr-13	9:30	Hazy	004924	2.7823	2.8135	13239.92	13240.92	1.00	1.79	1.79	1.79	107	291
15-Apr-13	10:47	Hazy	004926	2.8090	2.8468	13240.92	13241.92	1.00	1.65	1.61	1.63	98	387
15-Apr-13	13:00	Hazy	004928	2.7948	2.8280	13241.92	13242.92	1.00	1.61	1.61	1.61	96	344
20-Apr-13	8:20	Cloudy	006087	2.6308	2.6418	13266.93	13267.93	1.00	1.47	1.47	1.47	88	125
20-Apr-13	9:30	Cloudy	006089	2.6010	2.6120	13267.93	13268.93	1.00	1.47	1.47	1.47	88	125
20-Apr-13	10:35	Cloudy	006058	2.6192	2.6310	13268.93	13269.93	1.00	1.47	1.47	1.47	88	134
26-Apr-13	8:14	Cloudy	006046	2.6270	2.6359	13282.57	13283.57	1.00	1.47	1.47	1.47	88	101
26-Apr-13	10:28	Cloudy	006100	2.6087	2.6150	13283.57	13284.57	1.00	1.52	1.52	1.52	91	69
26-Apr-13	13:00	Cloudy	004688	2.7223	2.7323	13284.57	13285.57	1.00	1.61	1.61	1.61	97	104



Location: CMA4a - SPCA

Report on 24-hour TSP monitoring
 Action Level ($\mu\text{g}/\text{m}^3$) - 171.2
 Limit Level ($\mu\text{g}/\text{m}^3$) - 260

Date	Sampling Time	Weather Condition	Filter paper no.	Filter Weight, g		Elapse Time, hr		Sampling Time, hr	Flow Rate, m^3/min			Total Volume, m^3	TSP Level, $\mu\text{g}/\text{m}^3$
				Initial	Final	Initial	Final		Initial, Q_{si}	Final, Q_{sf}	Average		
2-Apr-13	8:00	Cloudy	004746	2.8186	2.9788	16512.37	16536.37	24.00	1.22	1.22	1.22	1759	91
8-Apr-13	8:00	Rainy	004727	2.8242	3.0811	16539.58	16563.58	24.00	1.31	1.31	1.31	1888	136
13-Apr-13	8:00	Cloudy	006076	2.6405	2.8321	16566.58	16590.57	23.99	1.29	1.29	1.29	1855	103
19-Apr-13	8:00	Cloudy	004922	2.8079	2.9363	16593.57	16617.57	24.00	1.34	1.34	1.34	1934	66
25-Apr-13	8:00	Cloudy	006035	2.6661	2.8029	16620.58	16644.58	24.00	1.28	1.29	1.28	1849	74

Report on 1-hour TSP monitoring
 Action Level ($\mu\text{g}/\text{m}^3$) - 312.5
 Limit Level ($\mu\text{g}/\text{m}^3$) - 500

Date	Sampling Time	Weather Condition	Filter paper no.	Filter Weight, g		Elapse Time, hr		Sampling Time, hr	Flow Rate, m^3/min			Total Volume, m^3	TSP Level, $\mu\text{g}/\text{m}^3$
				Initial	Final	Initial	Final		Initial, Q_{si}	Final, Q_{sf}	Average		
3-Apr-13	9:32	Cloudy	004915	2.7895	2.7988	16536.98	16537.98	1.00	1.10	1.10	1.10	66	141
3-Apr-13	10:51	Cloudy	004917	2.7851	2.7950	16537.98	16538.98	1.00	1.22	1.22	1.22	73	135
3-Apr-13	13:07	Cloudy	004919	2.7898	2.8025	16538.98	16539.98	1.00	1.26	1.26	1.26	76	168
9-Apr-13	13:00	Rainy	006070	2.6326	2.6376	16563.58	16564.58	1.00	1.27	1.27	1.27	76	66
9-Apr-13	14:17	Rainy	006072	2.6286	2.6329	16564.58	16565.58	1.00	1.29	1.29	1.29	77	56
9-Apr-13	15:31	Rainy	006074	2.6201	2.6228	16565.58	16566.58	1.00	1.29	1.29	1.29	77	35
15-Apr-13	9:25	Hazy	004923	2.7913	2.8118	16590.57	16591.57	1.00	1.10	1.10	1.10	66	309
15-Apr-13	10:30	Hazy	004925	2.8141	2.8346	16591.57	16592.57	1.00	1.27	1.22	1.25	75	274
15-Apr-13	11:35	Hazy	004927	2.7674	2.7874	16592.57	16593.57	1.00	1.27	1.26	1.27	76	263
20-Apr-13	8:35	Cloudy	006088	2.6202	2.6268	16617.58	16618.58	1.00	1.34	1.34	1.34	81	82
20-Apr-13	9:44	Cloudy	006090	2.6044	2.6115	16618.58	16619.58	1.00	1.34	1.34	1.34	81	88
20-Apr-13	10:47	Cloudy	006034	2.6441	2.6492	16619.58	16620.58	1.00	1.34	1.34	1.34	81	63
26-Apr-13	8:27	Cloudy	006098	2.5950	2.5989	16644.58	16645.58	1.00	1.29	1.29	1.29	77	51
26-Apr-13	9:32	Cloudy	006099	2.6141	2.6183	16645.58	16646.58	1.00	1.29	1.29	1.29	77	54
26-Apr-13	13:00	Cloudy	004687	2.7122	2.7186	16646.58	16647.58	1.00	1.29	1.29	1.29	77	83



Location: CMA5a - Children Garden opposite to Pedestrian Plaza

Report on 24-hour TSP monitoring

Action Level ($\mu\text{g}/\text{m}^3$) - 181
 Limit Level ($\mu\text{g}/\text{m}^3$) - 260

Date	Sampling Time	Weather Condition	Filter paper no.	Filter Weight, g		Elapse Time, hr		Sampling Time, hr	Flow Rate, m^3/min			Total Volume, m^3	TSP Level, $\mu\text{g}/\text{m}^3$
				Initial	Final	Initial	Final		Initial, Q_{si}	Final, Q_{sf}	Average		
2-Apr-13	8:00	Cloudy	004737	2.8397	3.0210	17511.57	17535.57	24.00	1.37	1.37	1.37	1974	92
8-Apr-13	8:00	Rainy	004170	2.7483	2.9738	17538.57	17562.57	24.00	1.37	1.37	1.37	1975	114
13-Apr-13	8:00	Cloudy	006115	2.6782	2.9566	17565.57	17589.56	23.99	1.39	1.39	1.39	2004	139
19-Apr-13	8:00	Cloudy	006084	2.6252	2.7169	17592.56	17616.56	24.00	1.32	1.32	1.32	1897	48
25-Apr-13	8:00	Cloudy	006052	2.6144	2.7187	17619.56	17643.56	24.00	1.36	1.37	1.36	1963	53

Report on 1-hour TSP monitoring

Action Level ($\mu\text{g}/\text{m}^3$) - 332
 Limit Level ($\mu\text{g}/\text{m}^3$) - 500

Date	Sampling Time	Weather Condition	Filter paper no.	Filter Weight, g		Elapse Time, hr		Sampling Time, hr	Flow Rate, m^3/min			Total Volume, m^3	TSP Level, $\mu\text{g}/\text{m}^3$
				Initial	Final	Initial	Final		Initial, Q_{si}	Final, Q_{sf}	Average		
3-Apr-13	8:20	Cloudy	004781	2.8216	2.8377	17535.57	17536.57	1.00	1.26	1.26	1.26	76	213
3-Apr-13	9:20	Cloudy	004180	2.7434	2.7530	17536.57	17537.57	1.00	1.39	1.39	1.39	84	115
3-Apr-13	13:00	Cloudy	004181	2.7530	2.7635	17537.57	17538.57	1.00	1.49	1.49	1.49	89	118
9-Apr-13	8:40	Rainy	006114	2.6943	2.7048	17562.57	17563.57	1.00	1.39	1.39	1.39	84	125
9-Apr-13	9:43	Rainy	006108	2.6051	2.6117	17563.57	17564.57	1.00	1.39	1.39	1.39	84	79
9-Apr-13	13:00	Rainy	006110	2.6025	2.6100	17564.57	17565.57	1.00	1.39	1.39	1.39	84	90
15-Apr-13	8:10	Hazy	006078	2.6375	2.6575	17589.56	17590.56	1.00	1.05	1.09	1.07	64	311
15-Apr-13	10:09	Hazy	006080	2.6331	2.6503	17590.56	17591.56	1.00	1.23	1.23	1.23	74	233
15-Apr-13	13:00	Hazy	006082	2.6255	2.6398	17591.56	17592.56	1.00	1.18	1.18	1.18	71	201
20-Apr-13	13:00	Cloudy	004783	2.8247	2.8336	17616.56	17617.56	1.00	1.36	1.36	1.36	82	109
20-Apr-13	14:03	Cloudy	006096	2.6223	2.6254	17617.56	17618.56	1.00	1.36	1.36	1.36	82	38
20-Apr-13	15:13	Cloudy	006134	2.6547	2.6622	17618.56	17619.56	1.00	1.36	1.36	1.36	82	92
26-Apr-13	8:05	Cloudy	006141	2.6474	2.6555	17643.57	17644.57	1.00	1.37	1.37	1.37	82	99
26-Apr-13	13:00	Cloudy	006149	2.6447	2.6534	17644.57	17645.57	1.00	1.37	1.37	1.37	82	106
26-Apr-13	14:40	Cloudy	006144	2.6522	2.6621	17645.57	17646.57	1.00	1.37	1.37	1.37	82	121



Location: CMA6a - WD2 PRE Office

Report on 24-hour TSP monitoring

Action Level - 187.3 $\mu\text{g}/\text{m}^3$
Limit Level - 260 $\mu\text{g}/\text{m}^3$

Date	Sampling Time	Weather Condition	Filter paper no.	Filter Weight, g		Elapse Time, hr		Sampling Time, hr	Flow Rate, m^3/min			Total Volume, m^3	TSP Level, $\mu\text{g}/\text{m}^3$
				Initial	Final	Initial	Final		Initial, Q_{si}	Final, Q_{sf}	Average		
2-Apr-13	8:00	Cloudy	006062	2.6107	2.7492	15825.77	15849.77	24.00	1.31	1.31	1.31	1888	73
8-Apr-13	8:00	Rainy	004728	2.8185	3.0060	15852.77	15876.77	24.00	1.35	1.35	1.35	1939	97
13-Apr-13	8:00	Cloudy	006112	2.5870	2.7856	15879.77	15903.77	24.00	1.35	1.34	1.34	1936	103
19-Apr-13	8:00	Cloudy	006083	2.6216	2.7120	15906.77	15930.77	24.00	1.25	1.26	1.25	1806	50
25-Apr-13	8:00	Cloudy	006136	2.6761	2.7937	15933.77	15957.77	24.00	1.29	1.30	1.30	1868	63

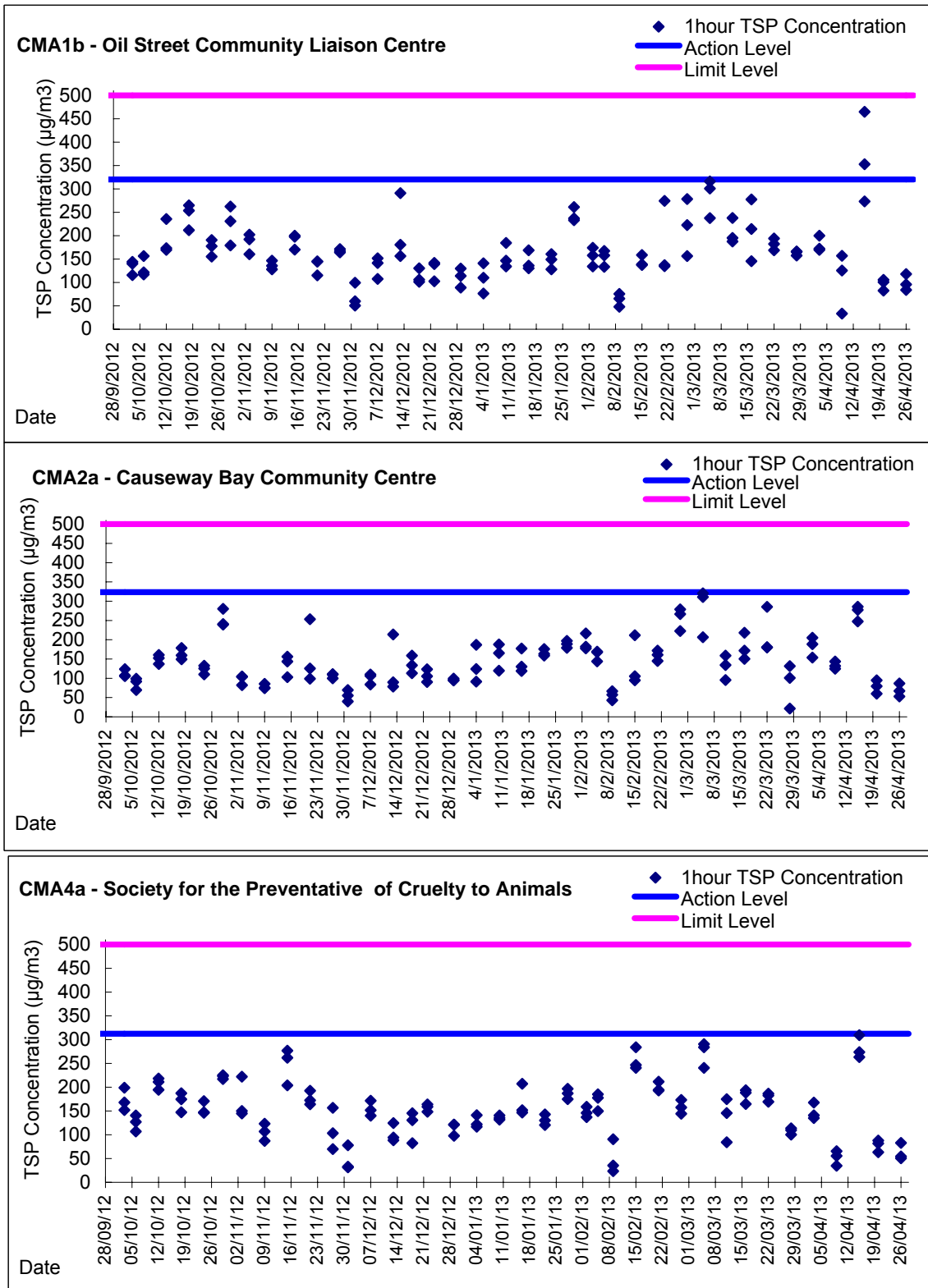
Report on 1-hour TSP monitoring

Action Level - 300.1 $\mu\text{g}/\text{m}^3$
Limit Level - 500 $\mu\text{g}/\text{m}^3$

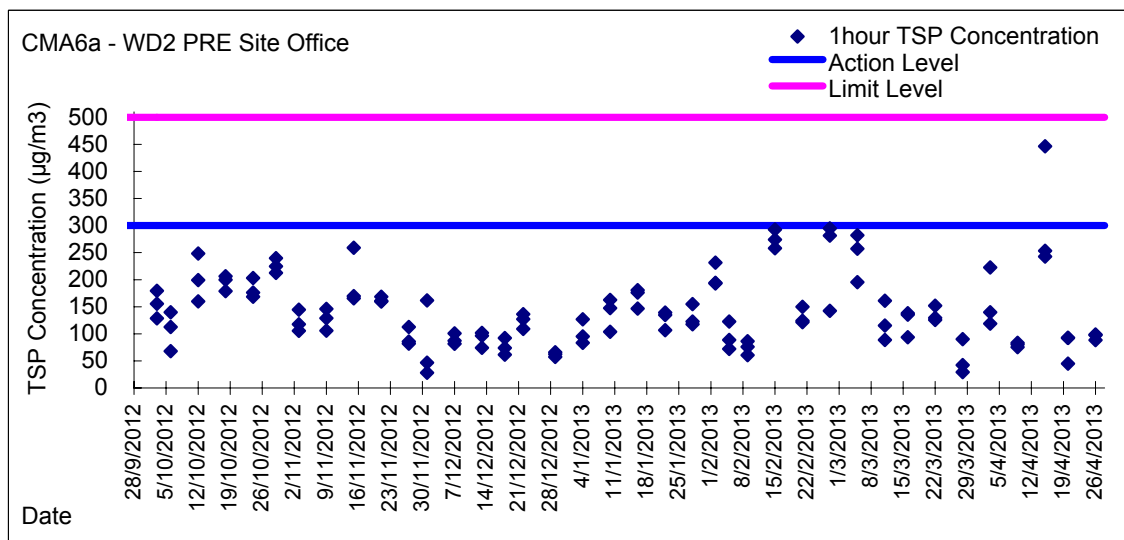
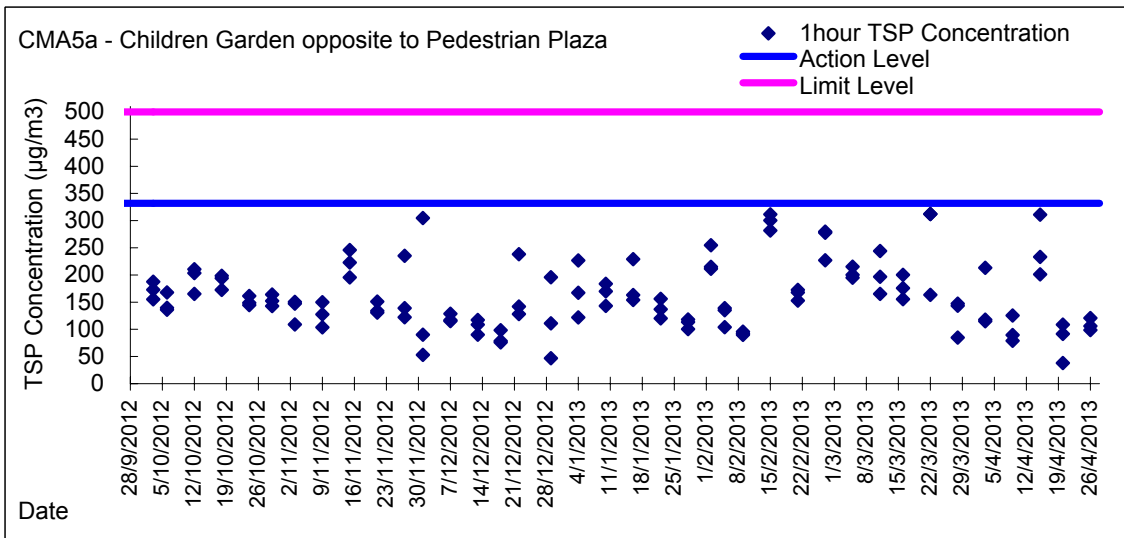
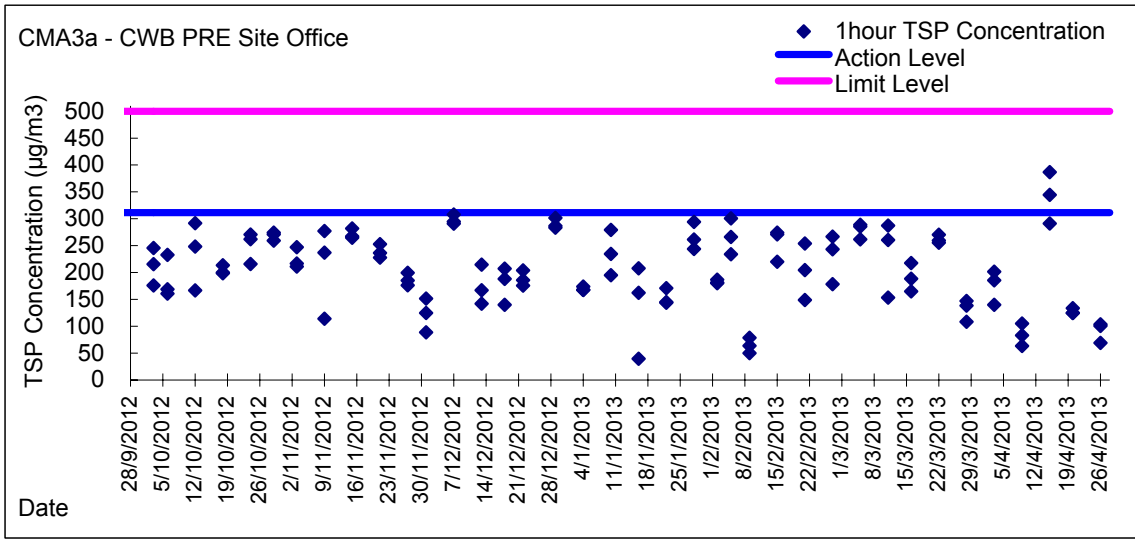
Date	Sampling Time	Weather Condition	Filter paper no.	Filter Weight, g		Elapse Time, hr		Sampling Time, hr	Flow Rate, m^3/min			Total Volume, m^3	TSP Level, $\mu\text{g}/\text{m}^3$
				Initial	Final	Initial	Final		Initial, Q_{si}	Final, Q_{sf}	Average		
3-Apr-13	8:10	Cloudy	003719	2.7619	2.7729	15849.77	15850.77	1.00	1.31	1.31	1.31	79	140
3-Apr-13	9:10	Cloudy	003714	2.7701	2.7788	15850.77	15851.77	1.00	1.17	1.27	1.22	73	119
3-Apr-13	13:00	Cloudy	004179	2.7508	2.7636	15851.77	15852.77	1.00	1.31	0.60	0.96	57	223
9-Apr-13	8:25	Rainy	006113	2.5910	2.5971	15876.77	15877.77	1.00	1.35	1.35	1.35	81	75
9-Apr-13	9:30	Rainy	006107	2.6136	2.6199	15877.77	15878.77	1.00	1.30	1.30	1.30	78	81
9-Apr-13	11:00	Rainy	006109	2.6297	2.6358	15878.77	15879.77	1.00	1.22	1.22	1.22	73	83
15-Apr-13	8:00	Hazy	006077	2.6395	2.6737	15903.77	15904.77	1.00	1.28	1.28	1.28	77	446
15-Apr-13	10:50	Hazy	006079	2.6110	2.6304	15904.77	15905.77	1.00	1.28	1.28	1.28	77	253
15-Apr-13	13:00	Hazy	006081	2.6030	2.6216	15905.77	15906.77	1.00	1.28	1.28	1.28	77	243
20-Apr-13	13:00	Cloudy	006091	2.6005	2.6077	15930.77	15931.77	1.00	1.30	1.30	1.30	78	92
20-Apr-13	14:13	Cloudy	006695	2.6126	2.6161	15931.77	15932.77	1.00	1.30	1.30	1.30	78	45
20-Apr-13	15:25	Cloudy	006133	2.6495	2.6567	15932.77	15933.77	1.00	1.30	1.30	1.30	78	92
26-Apr-13	13:00	Cloudy	006140	2.6508	2.6584	15957.77	15958.77	1.00	1.30	1.30	1.30	78	97
26-Apr-13	14:05	Cloudy	006150	2.6445	2.6514	15958.77	15959.77	1.00	1.30	1.30	1.30	78	88
26-Apr-13	15:25	Cloudy	006145	2.6435	2.6512	15959.77	15960.77	1.00	1.30	1.30	1.30	78	99



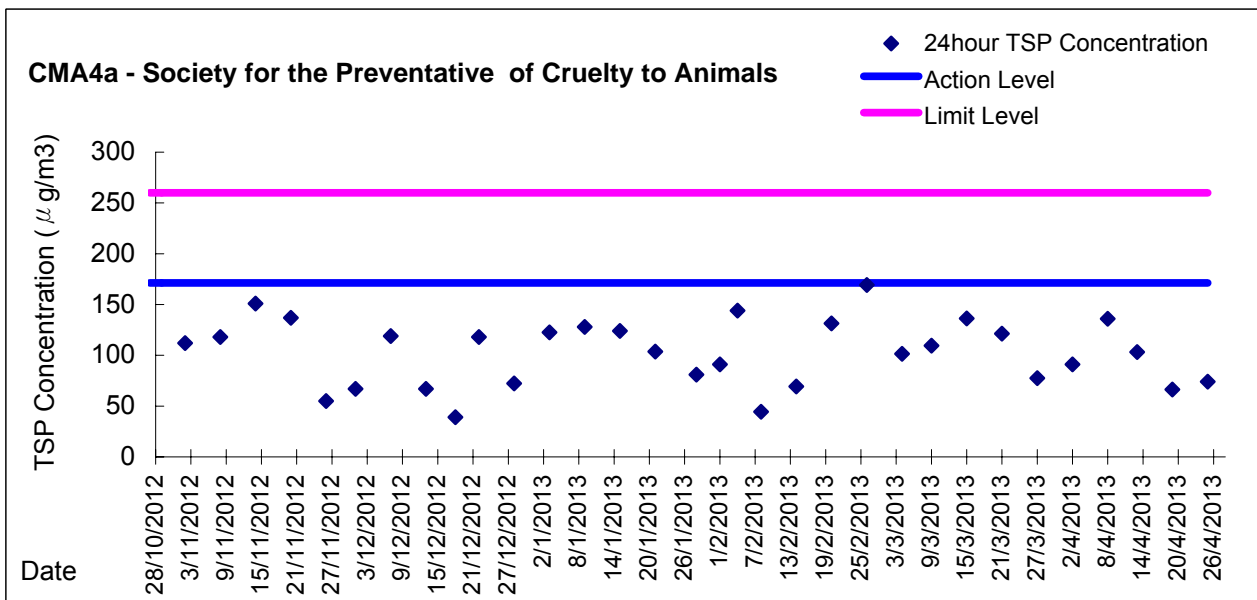
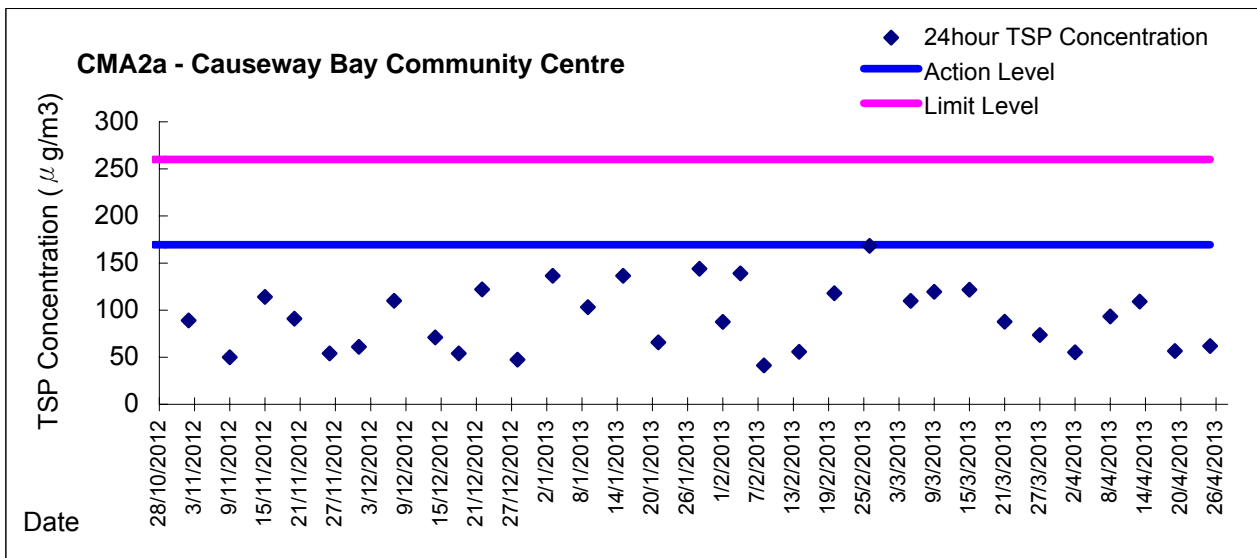
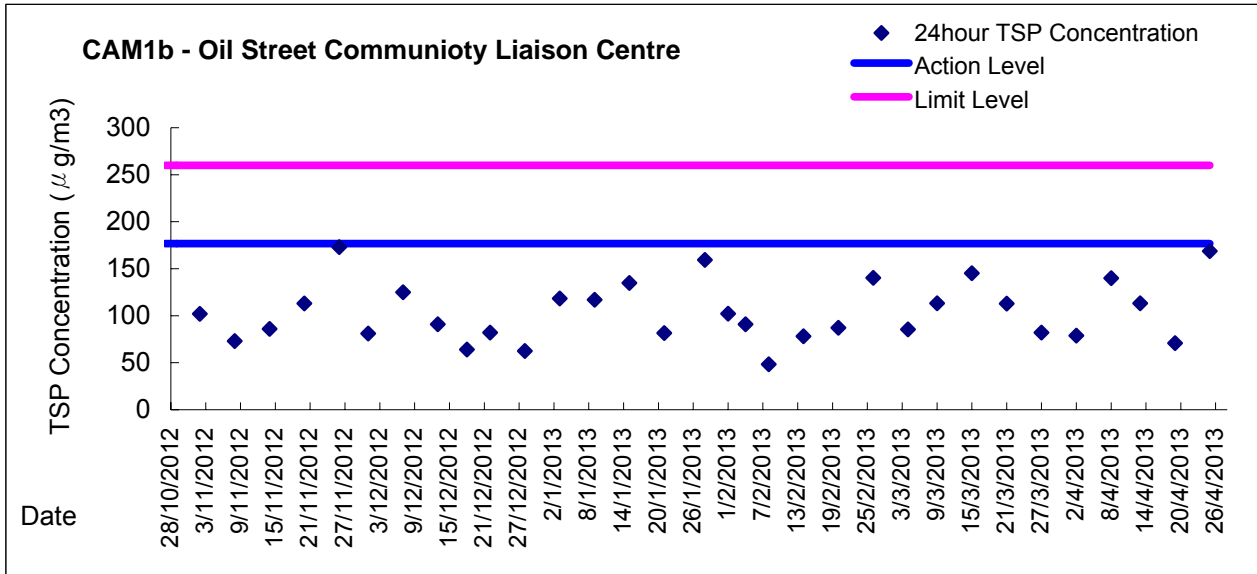
Graphic Presentation of 1 hour TSP Result



Graphic Presentation of 1 hour TSP Result



Graphic Presentation of 24 hour TSP Result



Graphic Presentation of 24 hour TSP Result

